

## In-Ground Players Bench

---

**NOTE: ALL HARDWARE IS GALVANIZED**

<b>PARTS LIST</b>	<b>BL-IGB-6BR</b>	<b>BL-IGB-9BR</b>	<b>BL-IGB-12BR</b>	<b>BL-IGB-15BR</b>	<b>BL-IGB-18BR</b>	<b>BL-IGB-21BR</b>
BL-IGB-BR Stringer	2 ea	2 ea	3 ea	3 ea	4 ea	5 ea
<b>PLANK HARDWARE</b>						
2"x10" plank (anodized finish)	2 ea	2 ea	2 ea	2 ea	2 ea	2 ea
2"x10" end cap (anodized finish)	4 ea	4 ea	4 ea	4 ea	4 ea	4 ea
retainer clip	8 ea	8 ea	12 ea	12 ea	16 ea	20 ea
5/16" x 1 1/4" carriage bolt	8 ea	8 ea	12 ea	12 ea	16 ea	20 ea
5/16" flange nut	8 ea	8 ea	12 ea	12 ea	16 ea	20 ea
3/16" aluminum pop rivets	8 ea	8 ea	8 ea	8 ea	8 ea	8 ea

<b>TOOL REQUIRED</b>
Tape measure
Hammer
Cordless drill
1/2" deep socket on ratchet
3/16" metal drill bit
Pop rivet gun
4' Level and small magnetic level

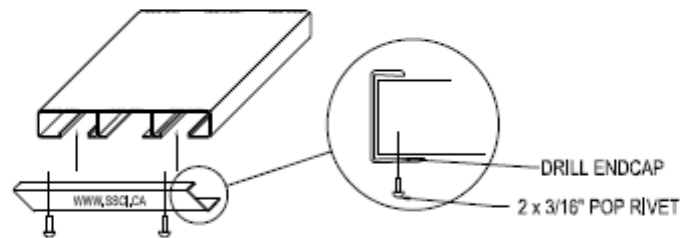
## In-Ground Players Bench

1. INSTALL THE END CAPS ON THE SEATBOARD AND BACKREST AS PER STEP #2. TURN SEATBOARD AND BACKREST OVER AND MARK THE LOCATIONS OF THE STRINGERS AS PER ATTACHED DRAWINGS. PLACE STRINGERS ON GROUND UPSIDE DOWN. INSTALL THE SEATBOARD AND BACKREST TO THE STRINGER USING RETAINER CLIPS AS PER STEP #3 WHILE ENSURING THAT THE PLANKS ARE SQUARE TO THE FACE OF THE STRINGER.

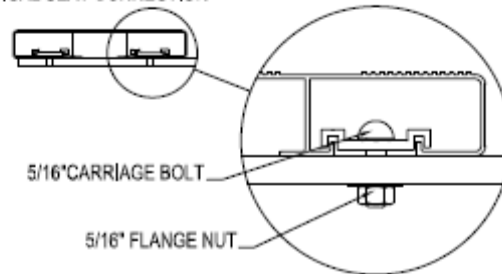
EXCAVATE FOOTINGS AS DETAILED ON INSTALLATION PRINT. NOTE: SIZE OF FOOTING IS ONLY A RECOMMENDATION. FOOTING SIZE AND DEPTH MAY REQUIRE ALTERATION PENDING GEOGRAPHIC LOCATION AND PROPENSITY FOR FROST HEAVE IN SPECIFIC GEOGRAPHIC LOCATION. FOOTING CHARACTERISTICS MAY ALSO BE DETERMINED BY OWNER OR CONSULTANT'S RECOMMENDATIONS. SPORT SYSTEMS CANADA INC. IS NOT RESPONSIBLE FOR ANY ISSUES RELATING TO FROST HEAVE OR IMPROPER INSTALLATION. FOOTINGS DETAILED ARE SHOWN AS A GUIDELINE ONLY AND IT IS RECOMMENDED THAT BUYER CONSULTS WITH LOCAL BUILDING OFFICIAL TO DETERMINE THE SUITABILITY OF ANY FOOTING POURED

POUR CONCRETE IN FOOTINGS AND PLACE ASSEMBLED BENCH IN FOOTINGS AS DETAILED. PLUMB AND LEVEL ASSEMBLED BENCH IN BOTH DIRECTIONS. ALLOW CONCRETE TO CURE 72 HOURS OR AS NECESSARY PRIOR TO USE.

### 2. SEAT END CAPS



### 3. TYPICAL SEAT CONNECTION



## **In-Ground Players Bench**

---

### **IMPORTANT**

Sport Systems makes every effort to ensure that its assembly instructions and other printed material are kept up to date. However, written specifications are subject to change without notice.

### **Installation**

Unless Sport Systems has agreed expressly to provide installation services, Buyer is responsible for installing & assembling products. Buyer assumes full responsibility for the proper installation & assembly of products.

### **Instructions and Warnings**

Sport Systems shall have no liability whatsoever for injury, damages, losses and expenses arising as a result of a failure to follow instructions from Sport Systems related to the proper installation, use, care and maintenance of products. Buyer should follow all such instructions, including without limitation:

PRODUCTS SHOULD BE INSPECTED PRIOR TO EACH USE FOR DAMAGE AND DETERIORATION AND SHOULD NOT BE USED IF DAMAGED OR DETERIORATED.  
PRODUCTS SHOULD NOT BE USED BY PARTICIPANTS WITHOUT PROPER TRAINING AND SUPERVISION.

### **Building Codes**

These bleachers are designed in accordance with both the NBC 2005 (National Building Code of Canada) and the OBC 2006 (Ontario Building Code). The buyer remains responsible for compliance with any other local or jurisdictional codes. Drawings stamped by a registered professional engineer are not included unless noted in the associated quote or invoice. Please consult with local code officials to determine any additional features which may be desired or required. Official interpretation and application rests solely with local authorities. Sport Systems Canada Inc. and its representatives cannot assume liability for code compliance and presents this information as unofficial guidelines only.