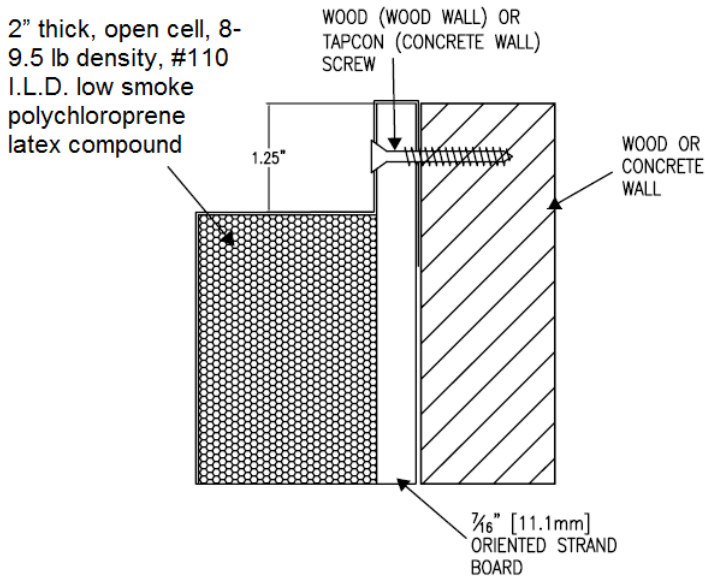


## Model PV-TO-89-STD Permanent Wall Padding



### Specifications

- Backed with 7/16" oriented strand board for permanent mounting
- Foam must be 2" thick, open cell, 8-9.5 lb density, #110 I.L.D. (indentation load deflection) low smoke polychloroprene latex compound
- Pad is made to a standard of 89" high overall
- **Entire pad assembly must meet or exceed (as per NBC 2005):**
  - **CAN/ULC-S102 – PASS**
- Heavy-duty vinyl covering must meet or exceed the following features:
  - Must supply test report(s) to show
    1. Passes ASTM D3421-75 phthalate testing with less than 0.1% phthalates content
    2. Vinyl has less than 300 ppm lead content
  - Fire retardant. Must supply test certificates to show:
    - ASTM E84-08a - Class A
    - NFPA-701 Large Scale Test - PASS
    - California State Fire Marshal Title 19: Section 1237 – PASS
  - Leather emboss finish
  - Minimum weight of 14 oz. per square yard
  - Must be a coated fabric
  - Anti-mildew treatments
  - Treated with U.V. pigments for weather resistance
  - Available in 9 standard colors:
    - Red, royal blue, navy blue, yellow, beige, forest green, burgundy, grey or black
  - Weave count: 9 X 9
  - Core fabric denier: 1300
  - Grab Tensile: 450 X 505 lbs. / in.
  - Tongue Tear: 75 X 75 lbs / in.
  - Adhesion: 25 lbs. / 2 in.