

UPRIGHT POSITION BL-2TR-DR
SCALE: 1/2" = 1'

OPERATING INSTRUCTIONS:
RAISING FOR STORAGE / TRANSPORTATION:

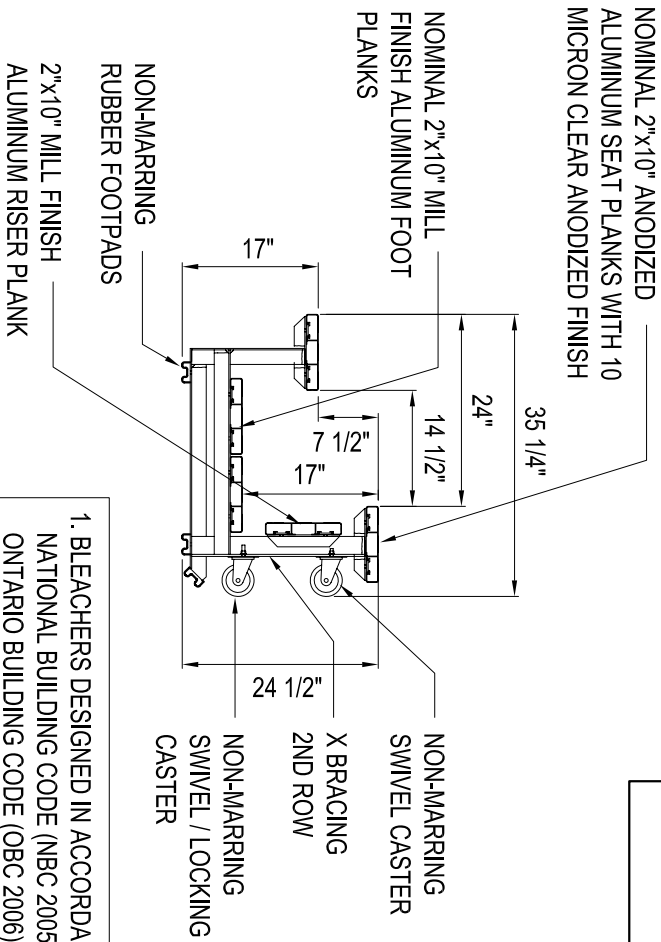
1. APPLY BRAKES ON CASTERS
2. HAVE 2 PEOPLE MINIMUM LIFT FIRST ROW OF BLEACHER AND RAISE IT UNTIL BOTH CASTERS ARE ON THE FLOOR
3. RELEASE BRAKES PRIOR TO TRANSPORTING
4. USE 2 PEOPLE FOR TRANSPORTING THE BLEACHER
5. ALWAYS APPLY BRAKES WHILE BLEACHER IS STORED

LOWERING FOR USE

1. APPLY BRAKES ON CASTERS
2. HAVE 2 PEOPLE MINIMUM LOWER THE BLEACHER SO THAT ALL RUBBER FOOT PADS MAKE CONTACT WITH THE FLOOR

GENERAL NOTES:

- DO NOT USE OR TRANSPORT BLEACHER ON UNEVEN SURFACE
- DO NOT TRANSPORT BLEACHER DURING WINDY CONDITIONS
- BLEACHER ONLY TO BE TRANSPORTED BY QUALIFIED INDIVIDUALS



NOMINAL 2"x10" ANODIZED ALUMINUM SEAT PLANKS WITH 10 MICRON CLEAR ANODIZED FINISH

NOMINAL 2"x10" MILL FINISH ALUMINUM FOOT PLANKS

NON-MARRING RUBBER FOOTPADS

2"x10" MILL FINISH ALUMINUM RISER PLANK

NON-MARRING SWIVEL CASTER

X BRACING 2ND ROW

NON-MARRING SWIVEL / LOCKING CASTER

1. BLEACHERS DESIGNED IN ACCORDANCE WITH NATIONAL BUILDING CODE (NBC 2005) AND ONTARIO BUILDING CODE (OBC 2006) REQUIREMENTS

SIDE ELEVATION BL-2TR-DR
SCALE: 1/2" = 1'

THIS DRAWING AND ALL INFORMATION CONTAINED HEREIN IS THE PROPERTY OF SPORT SYSTEMS CANADA INC. AND IS NOT TO BE REPRODUCED WITHOUT THE WRITTEN PERMISSION OF THIS MANUFACTURER. WE ASSUME NO RESPONSIBILITY FOR UNAUTHORIZED USE OF THIS DRAWING. SPORT SYSTEMS CANADA INC. IS NOT RESPONSIBLE FOR LOCAL PERMITS AND OCCUPANCY REQUIREMENTS.



Building a Better Game
28 Industrial Drive, Box 940
Aurora, Ontario, Canada
K0A 1X0

www.ssc.ca
1.877.800.4667
1.613.226.1112
F.613.226.5876

CLIENT
SSCI

TITLE
BL-2TR-DR

REV. 2	DATE JAN 10, 2011	DES. MM	PAGE 1/1
SCALE NOTED			