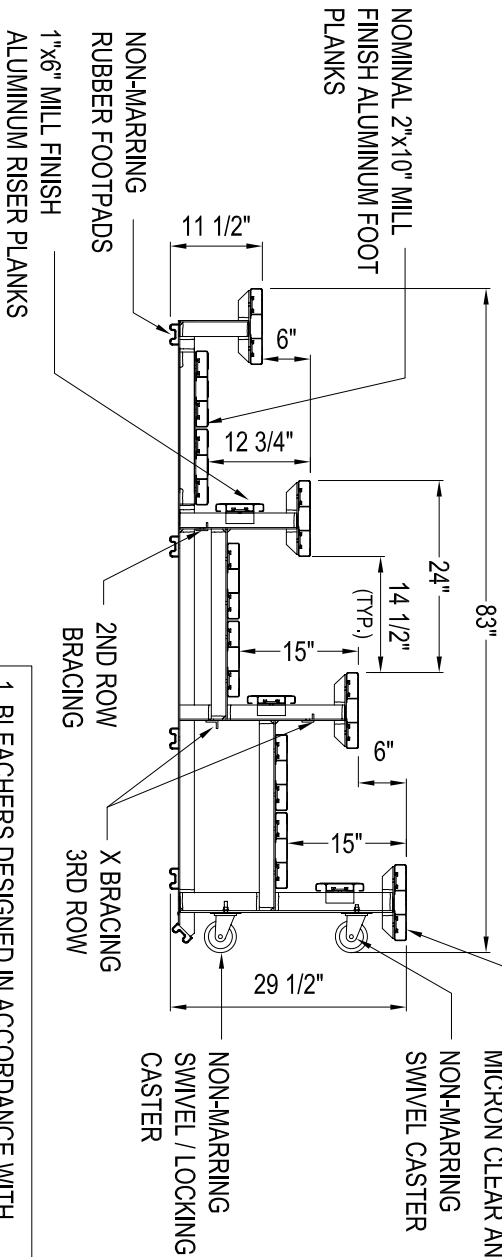


UPRIGHT POSITION BL-4TR-DR
SCALE: 1/2" = 1'



SIDE ELEVATION BL-4TR-DR
SCALE: 1/2" = 1'

1. BLEACHERS DESIGNED IN ACCORDANCE WITH NATIONAL BUILDING CODE (NBC 2005) AND ONTARIO BUILDING CODE (OBC 2006) REQUIREMENTS

OPERATING INSTRUCTIONS:
RAISING FOR STORAGE / TRANSPORTATION:

1. APPLY BRAKES ON CASTERS
2. HAVE 2 PEOPLE MINIMUM LIFT FIRST ROW OF BLEACHER AND RAISE IT UNTIL BOTH CASTERS ARE ON THE FLOOR
3. PLACE OUTRIGGERS IN THE STORAGE/TRAVEL POSITION USING PROVIDED LOCKING PIN.
4. RELEASE BRAKES PRIOR TO TRANSPORTING
5. USE 2 PEOPLE FOR TRANSPORTING THE BLEACHER
6. ALWAYS APPLY BRAKES WHILE BLEACHER IS STORED

LOWERING FOR USE

1. APPLY BRAKES ON CASTERS
2. PLACE OUTRIGGERS IN THE UPRIGHT POSITION AND LOCK IN PLACE USING THE PROVIDED LOCKING PINS
3. HAVE 2 PEOPLE MINIMUM LOWER THE BLEACHER SO THAT ALL RUBBER FOOT PADS MAKE CONTACT WITH THE FLOOR

GENERAL NOTES:

- DO NOT USE OR TRANSPORT BLEACHER ON UNEVEN SURFACE
- DO NOT TRANSPORT BLEACHER DURING WINDY CONDITIONS
- BLEACHER ONLY TO BE TRANSPORTED BY QUALIFIED INDIVIDUALS

THIS DRAWING AND ALL INFORMATION CONTAINED HEREIN IS THE PROPERTY OF SPORT SYSTEMS CANADA INC. AND IS NOT TO BE REPRODUCED WITHOUT THE WRITTEN PERMISSION OF THIS MANUFACTURER. WE ASSUME NO RESPONSIBILITY FOR UNAUTHORIZED USE OF THIS DRAWING. SPORT SYSTEMS CANADA INC. IS NOT RESPONSIBLE FOR LOCAL PERMITS AND OCCUPANCY REQUIREMENTS.



Building a Better Game
28 Industrial Drive, Box 940
Aurora, Ontario, Canada
K0A 1K0
www.ssci.ca
1.877.800.4667
1.613.298.1112
F.613.298.5976

CLIENT
SSCI

TITLE
BL-4TR-DR

| | | | |
|-------------|-------------------|---------|----------|
| REV. 2 | DATE DEC 27, 2010 | DES. MM | PAGE 1/1 |
| SCALE NOTED | | | |