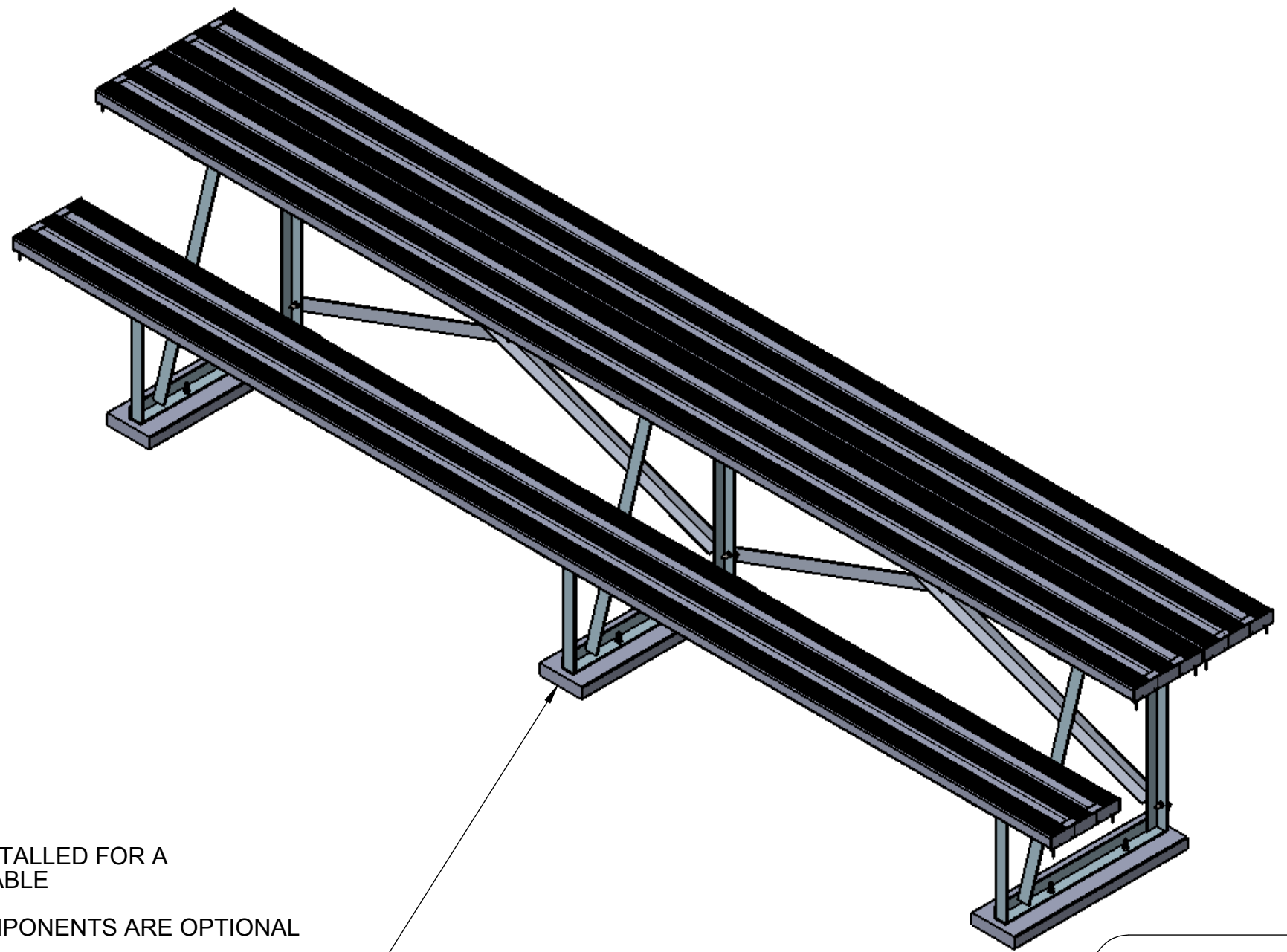


ITEM NO.	PART NUMBER	DESCRIPTION	QTY.
1	BL-TIMERSTABLE-STRINGER	TIMER'S TABLE STRINGER	3
2	BL-20774	ALUMINUM RETAINER CLIP 1-5/16" LENGTHS	18
3	HW-B-5000	GR 2 CARRIAGE BOLT MECH. GALV. 5/16" x 1-1/4"	18
4	BL-SLEEPER-96	2" x 6" x 96" HDPE RECYCLED SLEEPER	3
5	HW-N-10000	3/8" SERRATED FLANGE NUT MECH. GALV.	14
6	HW-N-10001	5/16" SERRATED FLANGE NUT MECH. GALV.	18
7	HW-B-50003	GR 5 CARRIAGE BOLT MECH. GALV. 3/8 x 2-1/2	6
8	HW-B-40000	GR 5 HEX MECH. GALV. 3/8" x 1-1/4"	8
9	BL-17400A	END CAP 9-1/2"	6
10	AL-16723A-12	2" x 10" NOMONAL BLEACHER PLANK ANODIZED FINISH 12'	3
11	HW-R-10000	ALUMINUM POP RIVET 3/16" x 0.251-0.375	12
12	BL-60-22	60-22 DIAGONAL BRACE	4



NOTES:

ITEM 4 SLEEPERS INSTALLED FOR A PORTABLE TIMERS TABLE

THE FOLLOWING COMPONENTS ARE OPTIONAL

(ITEM 4 QTY.3), (ITEM 7 QTY.6) AND (ITEM 5 QTY. 6)

NOTES:

IF BOLTING TO CONCRETE HARDWARE SUPPLIED BY OTHERS. RECOMMENDED HARDWARE 3/8" x 3" WEDGE BOLT.

THIS DRAWING AND ALL INFORMATION CONTAINED HEREIN IS THE PROPERTY OF SPORT SYSTEMS CANADA INC. AND IS NOT TO BE REPRODUCED WITHOUT THE WRITTEN PERMISSION OF THIS MANUFACTURER. WE ASSUME NO RESPONSIBILITY FOR UNAUTHORIZED USE OF THIS DRAWING. SPORT SYSTEMS CANADA INC. IS NOT RESPONSIBLE FOR LOCAL PERMITS AND OCCUPANCY REQUIREMENTS.



Building a Better Game

28 Industrial Drive, Box 940
Almonte, Ontario, Canada
K0A 1A0

www.ssci.ca
1.877.600.4667
T 613.256.1112
F 613.256.5876

CLIENT

S.S.C.I.

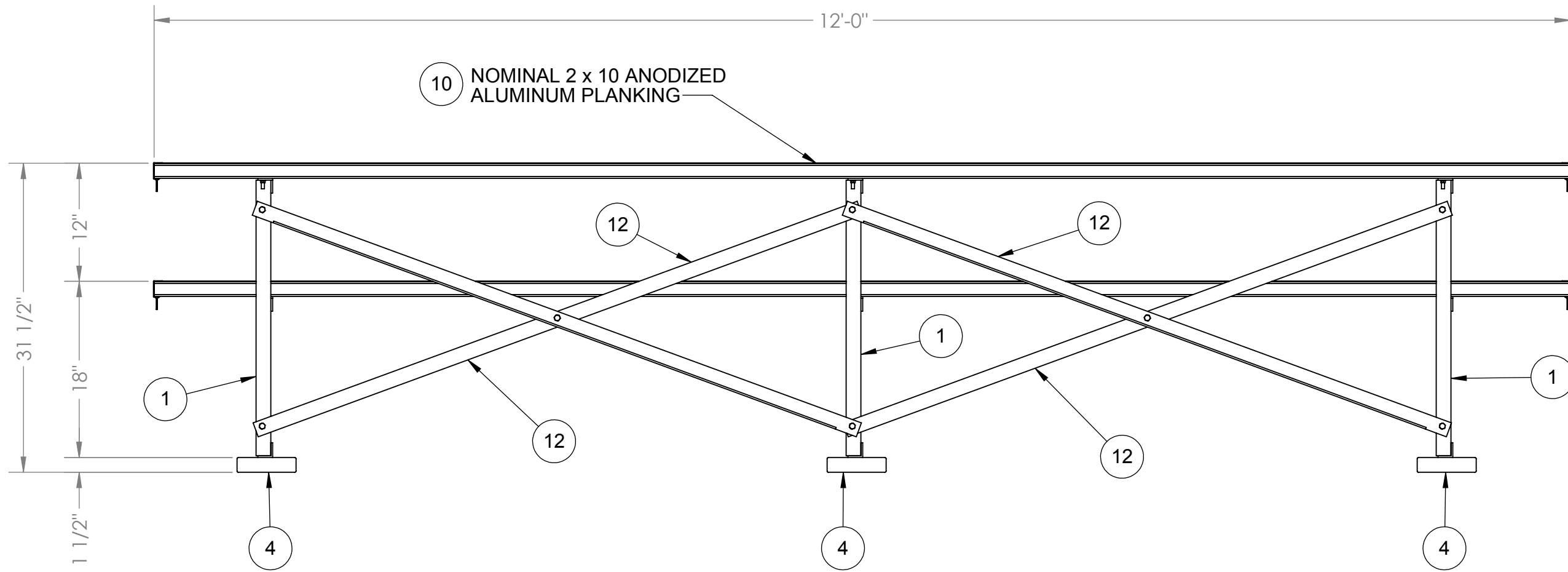
TITLE

TIMER'S TABLE 12' LONG

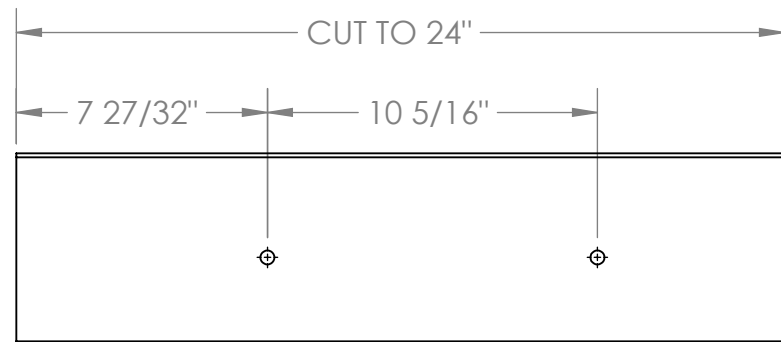
REV. 01	DATE Jan.30/2014	DRAWING No. BL-TIMERSTABLE-12
------------	---------------------	----------------------------------

SCALE N.T.S.	DES. John Cox	PAGE 1 of 5
-----------------	------------------	----------------

NOTES:
SEE SHEET 1 FOR BALLOON ITEM QUANTITIES



REAR ELEVATION

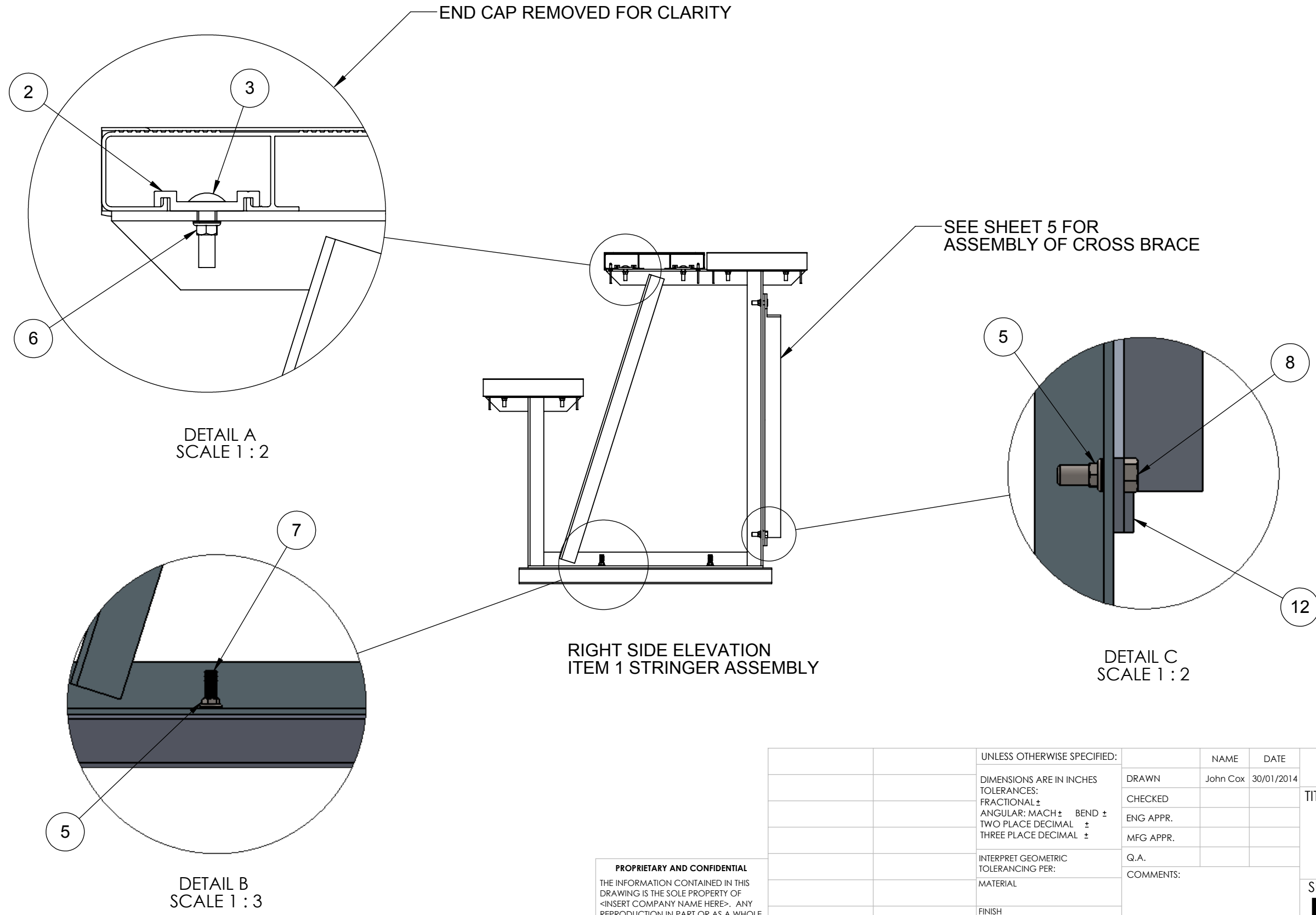


ITEM 4 SLEEPER

PROPRIETARY AND CONFIDENTIAL
THE INFORMATION CONTAINED IN THIS DRAWING IS THE SOLE PROPERTY OF <INSERT COMPANY NAME HERE>. ANY REPRODUCTION IN PART OR AS A WHOLE WITHOUT THE WRITTEN PERMISSION OF <INSERT COMPANY NAME HERE> IS PROHIBITED.

		UNLESS OTHERWISE SPECIFIED:	NAME	DATE
		DIMENSIONS ARE IN INCHES	DRAWN	
		TOLERANCES:	CHECKED	
		FRACTIONAL ±	ENG APPR.	
		ANGULAR: MACH ± BEND ±	MFG APPR.	
		TWO PLACE DECIMAL ±	Q.A.	
		THREE PLACE DECIMAL ±	COMMENTS:	
		INTERPRET GEOMETRIC TOLERANCING PER:	TITLE: TIMER'S TABLE 12' LONG	
		MATERIAL		
NEXT ASSY	USED ON	FINISH	SIZE DWG. NO. REV	
APPLICATION		DO NOT SCALE DRAWING	BB-TIMERSTABLE-12	
			SCALE: 1:24	WEIGHT: SHEET 2 OF 5

NOTES:
SEE SHEET 1 FOR BALLOON ITEM QUANTITIES



DETAIL A
SCALE 1 : 2

DETAIL B
SCALE 1 : 3

DETAIL C
SCALE 1 : 2

RIGHT SIDE ELEVATION
ITEM 1 STRINGER ASSEMBLY

PROPRIETARY AND CONFIDENTIAL
THE INFORMATION CONTAINED IN THIS DRAWING IS THE SOLE PROPERTY OF <INSERT COMPANY NAME HERE>. ANY REPRODUCTION IN PART OR AS A WHOLE WITHOUT THE WRITTEN PERMISSION OF <INSERT COMPANY NAME HERE> IS PROHIBITED.

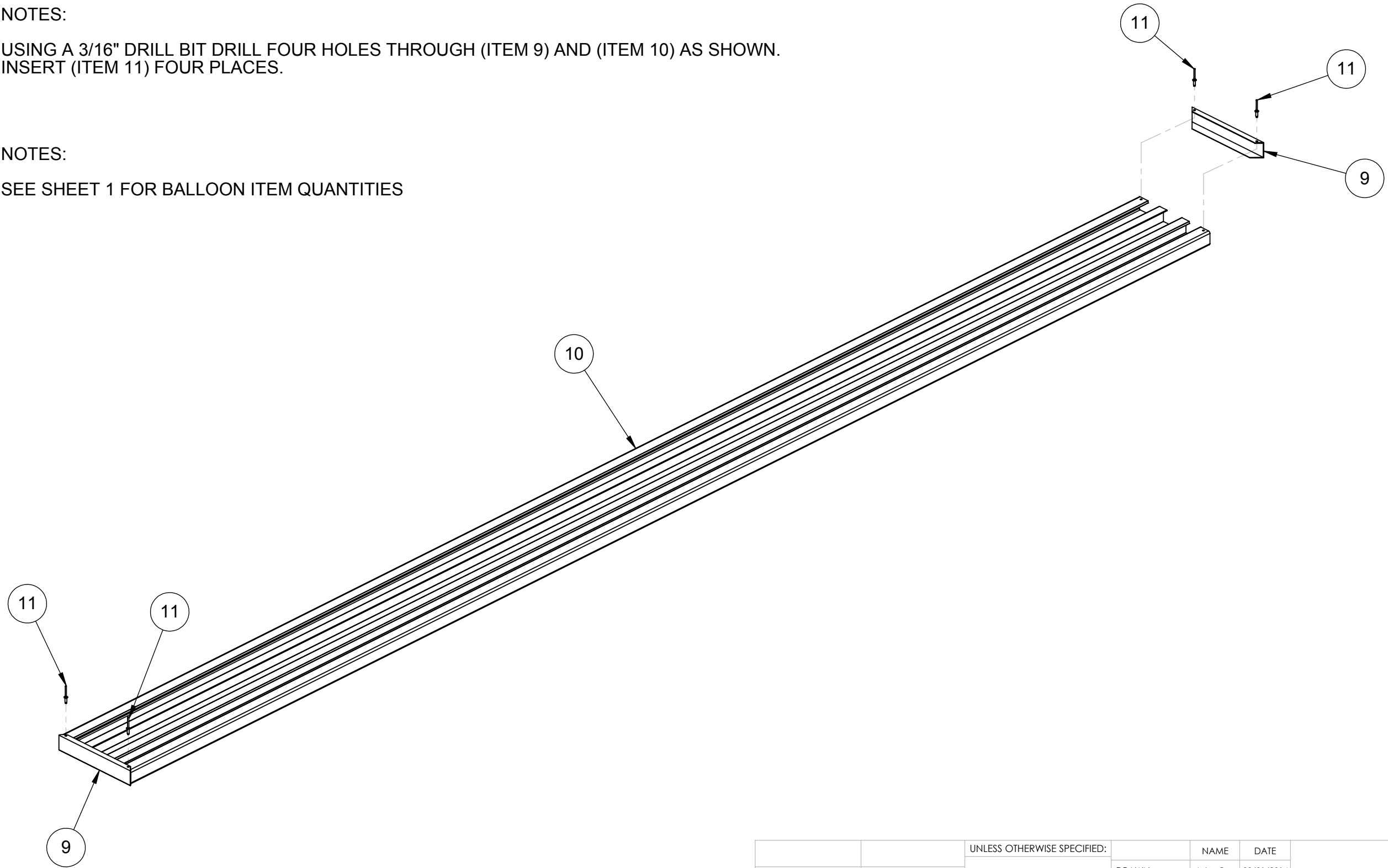
		UNLESS OTHERWISE SPECIFIED:		NAME	DATE	S.S.C.I.			
		DIMENSIONS ARE IN INCHES TOLERANCES: FRACTIONAL ± ANGULAR: MACH ± BEND ± TWO PLACE DECIMAL ± THREE PLACE DECIMAL ±		DRAWN	John Cox			30/01/2014	
		INTERPRET GEOMETRIC TOLERANCING PER:		CHECKED			TITLE: TIMER'S TABLE 12' LONG		
		MATERIAL		ENG APPR.					
		FINISH		MFG APPR.					
NEXT ASSY	USED ON			Q.A.			SIZE	DWG. NO.	REV
APPLICATION		DO NOT SCALE DRAWING		COMMENTS:			B	BL-TIMERSTABLE-12	01
						SCALE: 1:24		WEIGHT:	SHEET 3 OF 5

NOTES:

USING A 3/16" DRILL BIT DRILL FOUR HOLES THROUGH (ITEM 9) AND (ITEM 10) AS SHOWN. INSERT (ITEM 11) FOUR PLACES.

NOTES:

SEE SHEET 1 FOR BALLOON ITEM QUANTITIES



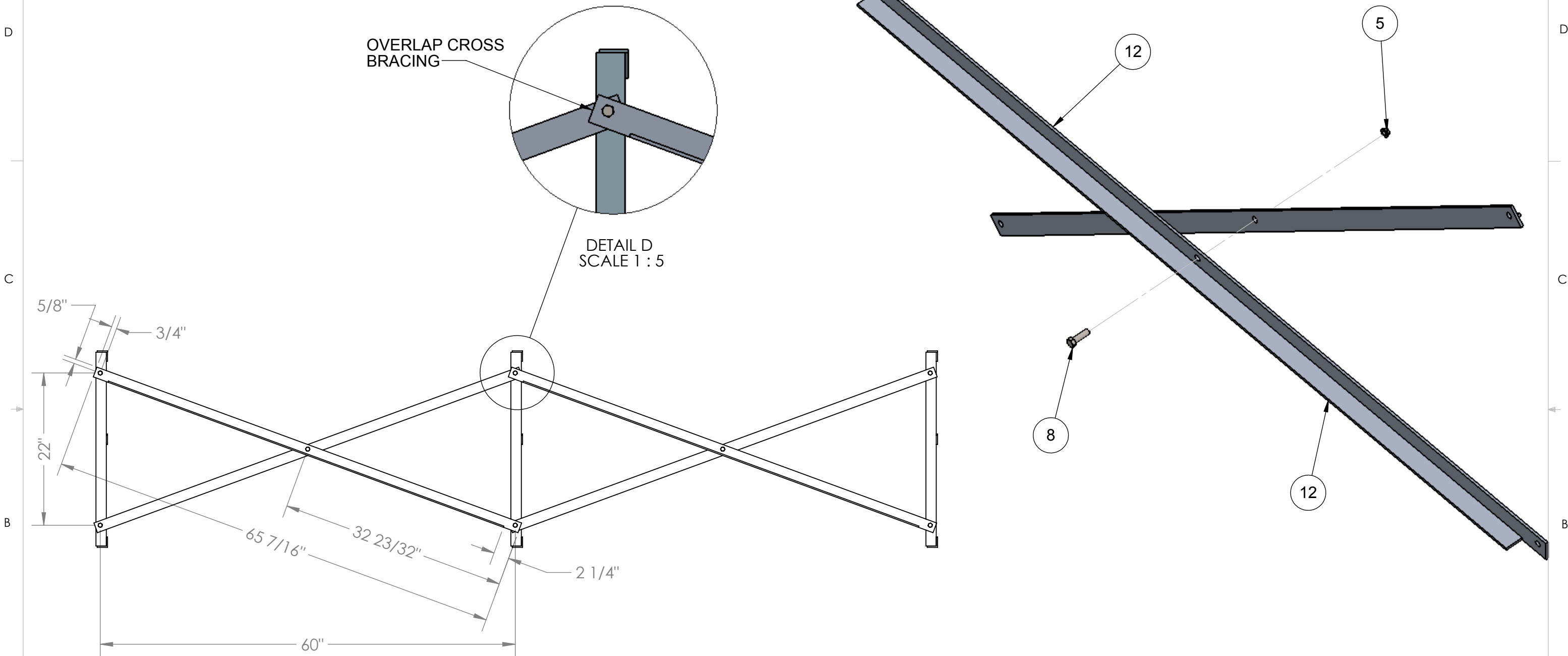
D
C
B
A

D
C
B
A

PROPRIETARY AND CONFIDENTIAL
 THE INFORMATION CONTAINED IN THIS DRAWING IS THE SOLE PROPERTY OF <INSERT COMPANY NAME HERE>. ANY REPRODUCTION IN PART OR AS A WHOLE WITHOUT THE WRITTEN PERMISSION OF <INSERT COMPANY NAME HERE> IS PROHIBITED.

		UNLESS OTHERWISE SPECIFIED:		NAME	DATE	S.S.C.I.			
		DIMENSIONS ARE IN INCHES TOLERANCES: FRACTIONAL ± ANGULAR: MACH ± BEND ± TWO PLACE DECIMAL ± THREE PLACE DECIMAL ±		DRAWN	John Cox			30/01/2014	
		INTERPRET GEOMETRIC TOLERANCING PER:		CHECKED			TITLE: BLEACHER PLANK 12' ASSEMBLY		
		MATERIAL		ENG APPR.					
		FINISH		MFG APPR.					
NEXT ASSY	USED ON			Q.A.			SIZE	DWG. NO.	REV
APPLICATION		DO NOT SCALE DRAWING		COMMENTS:			B	BL-TIMERSTABLE-12	01
							SCALE: 1:32 WEIGHT:		SHEET 4 OF 5

ITEM 12 CROSS BRACE ASSEMBLY



PROPRIETARY AND CONFIDENTIAL
 THE INFORMATION CONTAINED IN THIS DRAWING IS THE SOLE PROPERTY OF <INSERT COMPANY NAME HERE>. ANY REPRODUCTION IN PART OR AS A WHOLE WITHOUT THE WRITTEN PERMISSION OF <INSERT COMPANY NAME HERE> IS PROHIBITED.

		UNLESS OTHERWISE SPECIFIED:		NAME	DATE	S.S.C.I.	
		DIMENSIONS ARE IN INCHES TOLERANCES: FRACTIONAL ± ANGULAR: MACH ± BEND ± TWO PLACE DECIMAL ± THREE PLACE DECIMAL ±		DRAWN	John Cox		
		INTERPRET GEOMETRIC TOLERANCING PER:		CHECKED			TITLE: BL-60-22 ALUMINUM BRACE ASSEMBLY
		MATERIAL		ENG APPR.			
		FINISH		MFG APPR.			
NEXT ASSY	USED ON	DO NOT SCALE DRAWING		Q.A.			SIZE B
APPLICATION				COMMENTS:			DWG. NO. BL-60-22
							REV 01
							SCALE: 1:12 WEIGHT: SHEET 5 OF 5